




# Appendix 6 - CSI Threshold Map

Valemount and Surrounding Area

## Legend

Critical Surface Fire Intensity (CSI) attempts to quantify the risk that a fire within a given polygon will reach sufficient intensity to move into the crown, thus greatly increasing the spread rate. Slope, aspect, fuel types, and stand structure are among the factors that contribute to the risk. Points are assigned to different slope classes, fuel types, etc., and weighted to determine the final CSI value. A threshold value is then chosen, and stands whose CSI exceeds this value are shaded in this map.

Unique Values on CSI-CK

-  Exceeds Threshold Value
-  Does Not Exceed Threshold Value
-  Default Representation for CSI-Threshold

Default-Polygon

Default Representation for CN Rail

Default-Line

Default Representation for Pipeline

Default-Line

Default Representation for Highways

Default-Line

Default Representation for Stream Labels

Default-Line

Default Representation for Power Lines

Default-Line

Default Representation for Mapsheet Boundaries



Default Representation for Valemount Fire Protection Boundaries

Default-Polygon

Default Representation for Streams

Default-Line

Default Representation for Trails and Overgrown Rds.

Default-Line

Default Representation for Secondary Paved Roads

Default-Line

Default Representation for Lot Labels

Default-Line

Default Representation for Unpaved Roads

Unpaved Road

Default Representation for Lot Lines

Default-Line

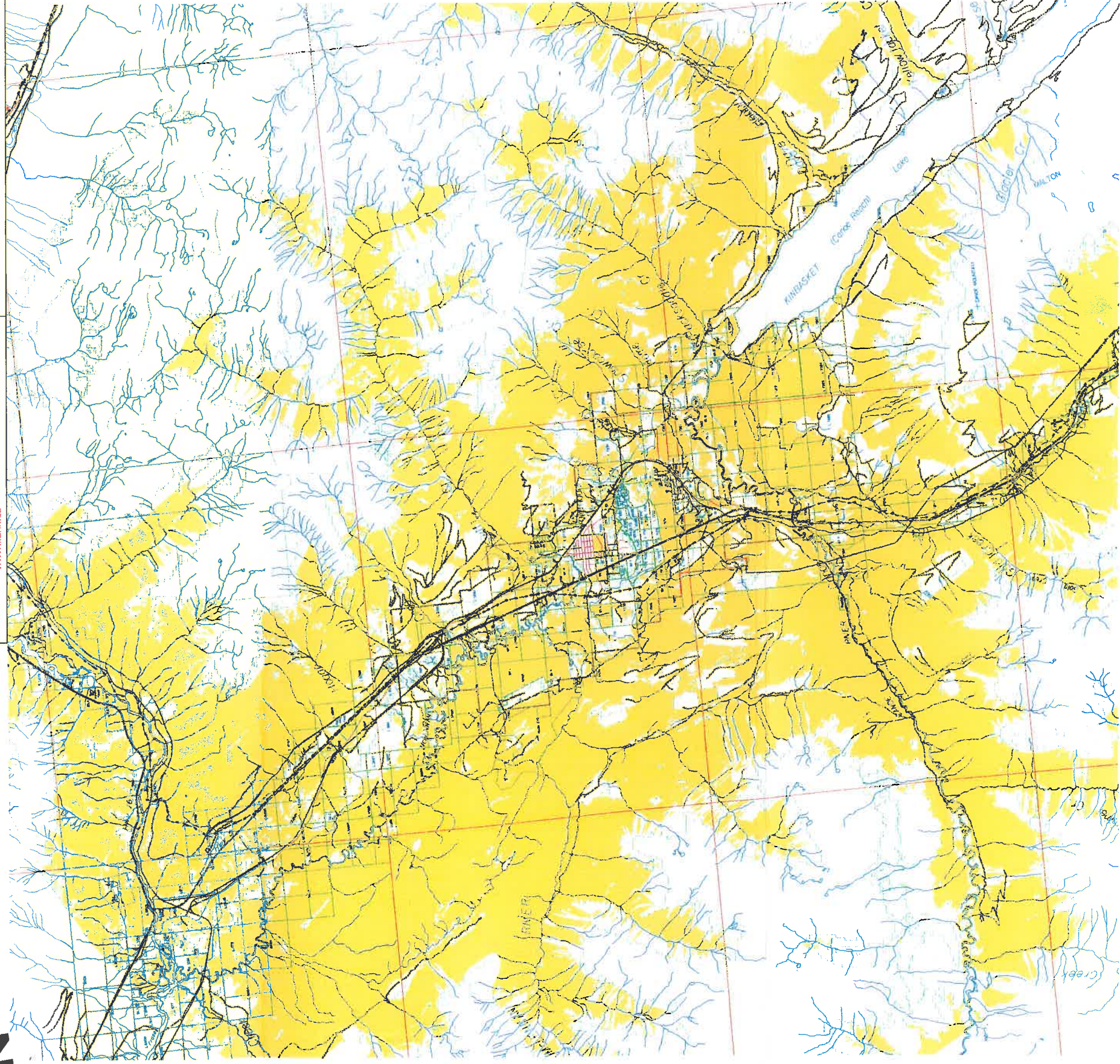
Default Representation for Shoreline

Default-Line

Default Representation for Mapsheet Boundaries

Default-Line

Scale 1:150,000



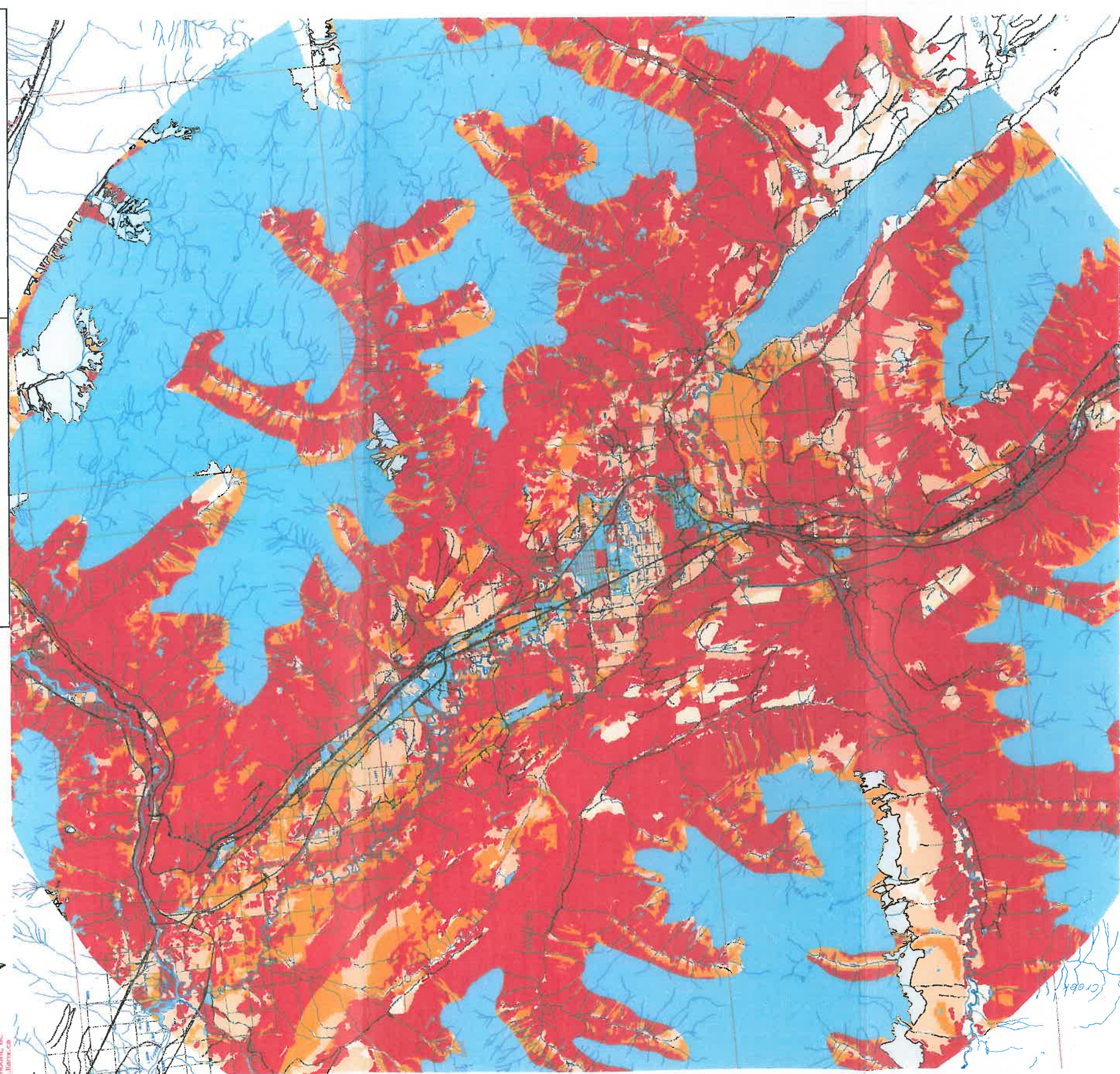
# Appendix 6 - Head Fire Intensity Classes

Valemount and Surrounding Area

## Legend

<p>Unique Values on HFL-CIS</p> <ul style="list-style-type: none"> <li>Unknown</li> <li>0 (0-9)</li> <li>4 (501-2000)</li> <li>6 (2001-4000)</li> <li>8 (4001-10,000)</li> <li>10 (&gt;10,000)</li> </ul>	<ul style="list-style-type: none"> <li>Small Stream</li> <li>Default Representation for Valemount Fire Protection Boundaries</li> <li>Default-Polygon</li> <li>Default Representation for Trails and Overgrown Rd.</li> <li>Trail or Overgrown Road</li> <li>Default Representation for Secondary Paved Roads</li> <li>Paved Secondary Road</li> <li>Default Representation for Lot Labels</li> <li>Lot Labels</li> <li>Default Representation for Unpaved Roads</li> <li>Unpaved Road</li> <li>Default Representation for Lot Lines</li> <li>Default-Line</li> <li>Default Representation for Shoreline</li> <li>River or Lake Shore</li> <li>Default Representation for Mapsheet Boundaries</li> <li>Default-Line</li> </ul>
<ul style="list-style-type: none"> <li>Default Representation for CN Rail</li> <li>Default Representation for Pipeline</li> <li>Default-Line</li> <li>Default Representation for Highways</li> <li>Default-Line</li> <li>Default Representation for Stream Labels</li> <li>Default-Line</li> <li>Default Representation for Power Lines</li> <li>Default-Line</li> <li>Default Representation for Streams</li> <li>Default-Line</li> </ul>	

Scale 1:150,000



# Appendix 6 - Spotting Distance Classes

## Valemount and Surrounding Area

Spotting Distance Classes refers to the estimated distance that a fire in the polygon can potentially spot into another polygon. For example, a polygon with a 2000m spotting class means that a fire within this polygon could potentially throw sparks or burning debris up to 2km from the fire edge, depending on wind and other factors.

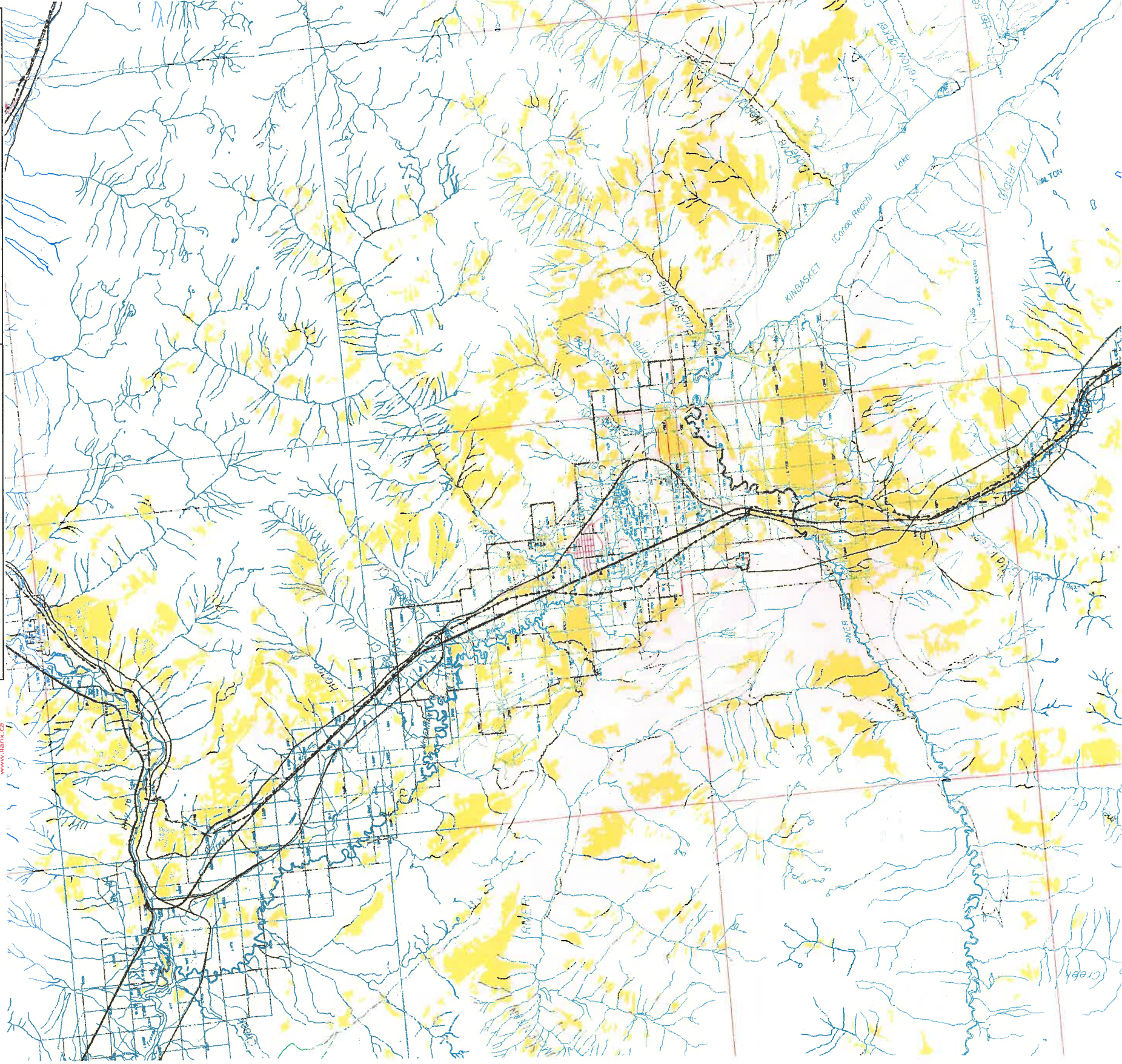
2 Scale 1:150,000 8 Km



**naix**  
SOLUTIONS  
Valemount, BC  
www.naix.ca

### Legend

Unique Values on SPOT_DIST	Default Representation for Valemount Fire Protection Boundaries
..... 0	..... Default-Polygon
..... 260	..... Default Representation for Trails and Overgrown Rds.
..... 500	..... Default-Line
..... 2000	..... Default Representation for Secondary Paved Roads
..... Default Representation for CN Rail	..... Default-Line
..... Default-Line	..... Default Representation for Lot Labels
..... Default Representation for Highways	..... Default-Line
..... Default-Line	..... Default Representation for Unpaved Roads
..... Default Representation for Pipeline	..... Default-Line
..... Default-Line	..... Default Representation for Lot Lines
..... Default Representation for Power Lines	..... Default-Line
..... Default-Line	..... Default Representation for Shoreline
..... Default Representation for Stream Labels	..... Default-Line
..... Default-Line	..... Default Representation for Mapsheet Boundaries
..... Default Representation for Streams	..... Default-Line
..... Default-Line	..... Default-Line



# Appendix 6 - Spotting Threshold Classes

Valemount and Surrounding Area

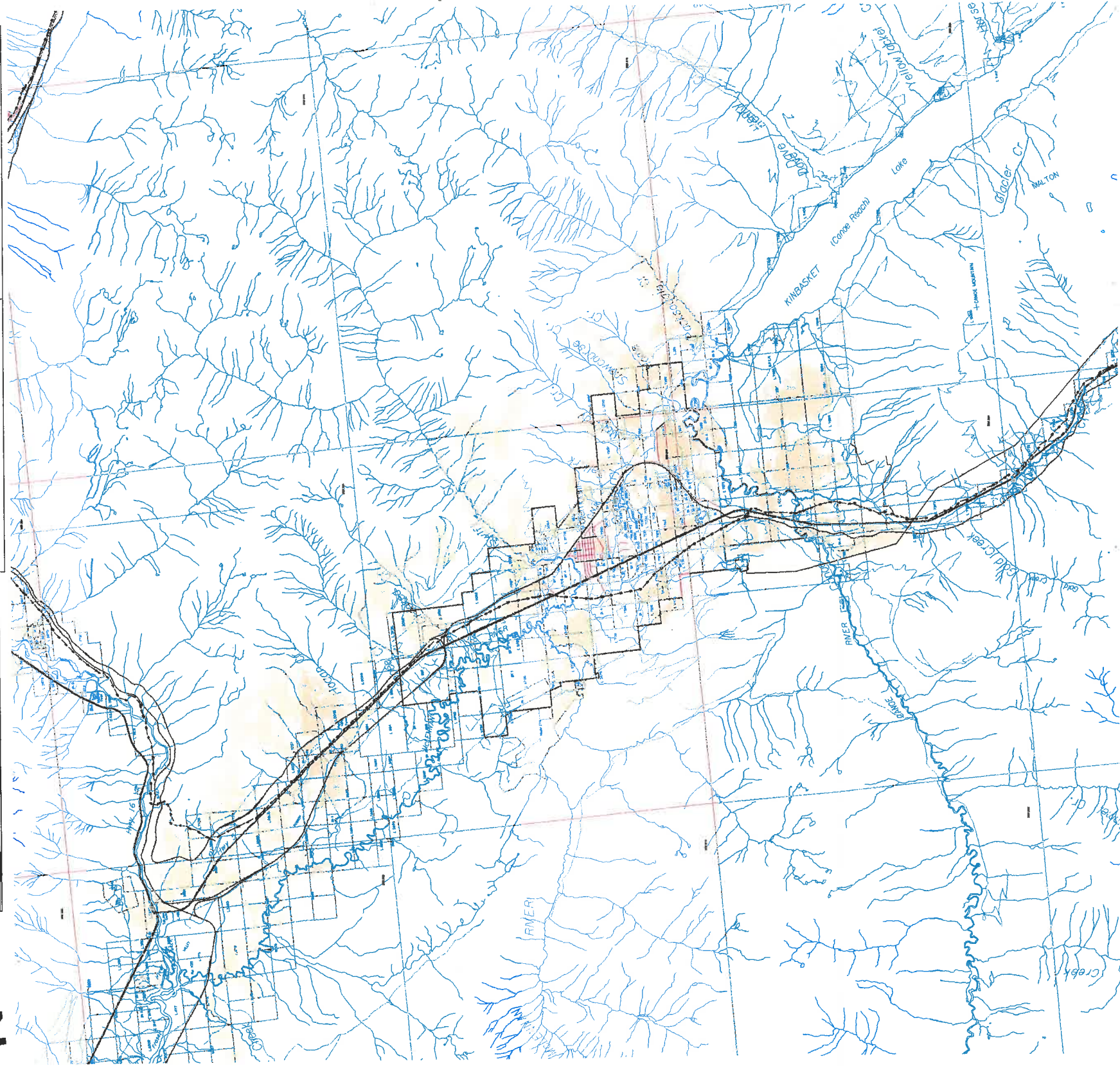
Spotting threshold indicates whether any part of the polygon can spot a fire into the interface zone.

## Legend

Unique Values on SPOT	YES	Default Representation for Streams
	NO	Default Line
Default Representation for Mapsheet Boundaries	Default-Line	Default Representation for Valemount Fire Protection Boundaries
Default Representation for Mapsheet Labels	Default-Line	Default Polygon
Default Representation for CN Rail	Default-Line	Default Representation for Trails and Overgrown Rds.
Default Representation for Highways	Default-Line	Default Line
Default Representation for Pipeline	Default-Line	Default Representation for Secondary Paved Roads
Default Representation for Power Lines	Default-Line	Default Line
Default Representation for Stream Labels	Default-Line	Default Representation for Lot Labels
		Default Line
		Default Representation for Dugraved Roads
		Default Line
		Default Representation for Lot Lines
		Default Line
		Default Representation for Shoreline
		Default Line
		Default Representation for Mapsheet Boundaries
		Default Line



Scale 1:150,000  
0 2 4 6 8 Km



**Appendix 6**  
**Table 1**  
**Summary of Canadian Fire Prediction System**  
**Fuel Type Classification Codes and Description**

<b>Fuel Type Code</b>	<b>Description</b>
<b>C-1</b>	Spruce-lichen woodland
<b>C-2</b>	Boreal spruce
<b>C-3</b>	Mature Jack or Lodgepole pine
<b>C-4</b>	Immature Jack / Lodgepole pine or densely stock Ponderosa pine / Douglas-fir
<b>C-5</b>	Red and white pine
<b>C-6</b>	Conifer Plantation
<b>C-7</b>	Ponderosa pine / Douglas-fir
<b>D-1</b>	Leafless Aspen or Deciduous Shrub
<b>G</b>	Glacier
<b>I</b>	Interface
<b>M-2</b>	Boreal mixedwood
<b>N</b>	Non-fuel
<b>O-1b</b>	Standing Grass
<b>S-1</b>	Jack or lodgepole pine slash
<b>S-2</b>	White spruce / balsam fir slash
<b>S-3</b>	Coastal cedar / hemlock / Douglas-fir slash
<b>U</b>	Unclassified
<b>W</b>	Water